

MAY 2024

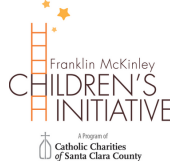


FMCI Community Center

1399 Santee Drive, Bldg. 2
San Jose, CA 95122

WE SPEAK

English, Spanish and Vietnamese
Se Habla Español ----- Chúng tôi nói tiếng Việt



Follow us

Facebook.com/fmcisanjose



Need MEDI-CAL Insurance? Please call (408) 758-4600
¿Necesita Seguro Medico de MEDI-CAL, (408) 758-4600

SUNDAY

MONDAY

TUESDAY

WEDNESDAY

THURSDAY

FRIDAY

SATURDAY



CINCO DE MAYO
5

ESL Class
10:00am - 12:00pm
Rosary/Rosario
5:00pm - 6:00pm
6

Senior Group
9:00am - 10:30am
7

ESL Class
10:00am - 12:00pm
A La Carte
3:30pm - 4:30pm
8

SH Food Distribution
3:30pm - 5:30pm
City Team
Cloths Drive
4pm -5pm
9

Senior Wellness Drop-in
10:00am-11:30am
HAPPY MOTHER'S DAY
10

Santee Bazar
8:00am-2:00pm
11

Mother's Day
Love U MOM
12

ESL Class
10:00am - 12:00pm
Rosary/Rosario
5:00pm - 6:00pm
13

Senior Group
9:00am - 10:30am
14

ESL Class
10:00am - 12:00pm
A La Carte
3:30pm - 4:30pm
15

SH Food Distribution
3:30pm - 5:30pm
16

Senior Wellness Drop-in
10:00am-11:30am
17

Litter Pick Up
9:00am -11:00am
18

ESL Class
10:00am - 12:00pm
Rosary/Rosario
5:00pm - 6:00pm
19

ESL Class
10:00am - 12:00pm
Rosary/Rosario
5:00pm - 6:00pm
20

Senior Group
9:00am - 10:30am
21

ESL Class
10:00am - 12:00pm
A La Carte
3:30pm - 4:30pm
22

SH Food Distribution
3:30pm - 5:30pm
23

Senior Wellness Drop-in
10:00am-11:30am
24

Santee Bazar
8:00am-2:00pm
25

26

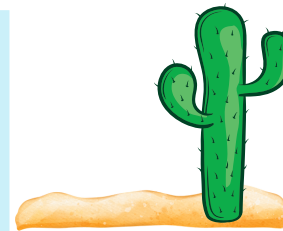
CENTER CLOSED
MEMORIAL DAY
27

Senior Group
9:00am - 10:30am
28

ESL Class
10:00am - 12:00pm
A La Carte
3:30pm - 4:30pm
29

SH Food Distribution
3:30pm - 5:30pm
30

Senior Wellness Drop-in
10:00am-11:30am
31



Open Monday to Friday 8:00 AM - 4:30 PM
Center Phone Number / Numero de Telefono: (408) 640 - 9654